

DO NOT OPEN THE SEAL OF THE BOOKLET UNTIL YOU ARE TOLD TO DO SO

SBI CLERK

TEST SERIES

DATE- __/__/__

DAY- _____

INSTRUCTION FOR CANDIDATE

TEST SERIES NO.

SG Set 20

QUESTION- 100

MARKS- 100

NEGATIVE MARK- 0.25

DURATION- 60 MIN.

1. Use only ball pens with black or blue ink
2. As soon as the examination starts, you must check this question booklet and if there is any unprinted, mutilated or partially printed page or question in it, then replace it with the correct question booklet through the examiner.
3. There are a total of 100 questions in this question booklet.
4. This is an objective test, in which four options are given for the answer to each question, you have to choose only one option with the correct answer out of these four options.
5. Answers to all questions are to be written on separate answer sheets.

6. Instructions for filling the answer sheet are written on the back side of the answer sheet, read them carefully before filling the answer sheet.
7. Blank pages are available in this question booklet for rough work.
8. Candidates cannot leave the room before the end of the examination.
9. After the examination is over, you can go out only with his permission after submitting the ORIGINAL COPY of the answer sheet to the invigilator.
10. After the completion of the examination, the candidate is allowed to take the question booklet and answer sheet with him/her.
11. 1 marks will be given for each correct answer and 0.25 marks will be deducted for each wrong answer.



10 Years of Excellence

Spardhaguru India Private Limited

Website:- www.spardha.guru

Email ID:- info@spardha.guru

ADDRESS:- No 8, 24th Block Manasi Nagar Beside of Bliss serviced Apartment, Mysuru, Karnataka 570029

HELPLINE 90711 54445, 90711 64446, 90711 74447

Reasoning Ability

Direction(1-3): In the following questions assuming the given statement to be true, find which of the conclusion(s) among given conclusions is/are definitely true and then give your answers accordingly.

1). Statement:

$G > Y; E \leq S = D; F > T = G; D \leq R = F$

Conclusion:

I. $Y < R$

II. $R \geq V$

- (a) Only I follows (b) Only II follows
(c) Either I or II follows (d) Neither I nor II follows
(e) Both I and II follow

2). Statements:

$K > I \geq T \geq E; O < R < K$

Conclusions:

I. $R < E$

II. $O < T$

- (a) Neither I nor II follows (b) Both I and II follows
(c) Only I follows (d) Only II follows
(e) Either I or II follows

3). Statements:

$C < L < O = U = D \geq S > Y$

Conclusions:

I. $L > Y$

II. $C < D$

- (a) Only I follows (b) Both I and II follows
(c) Neither I nor II follows (d) Only II follows
(e) Either I or II follows

Direction(4-8): Study the following data carefully and answer the questions accordingly.
Seven people are born in seven different years i. 1949, 1960, 1972, 1980, 1987, 1998, and 2007 but not necessarily in the same order. The age is calculated according to the present year i. 2021.
The age of U is the last two digits of the year in which F is born. Three people are born between F and S. Two people are born between S and Q. W is younger than F. The age of W is not an odd number. The age difference of N and V is not more than 30 years. The age difference of V and U is a perfect cube.

4). Who among the following is the youngest?

- (a) Q (b) N (c) V (d) W (e) None of these

5). What is the age of V?

- (a) 72 years (b) 61 years (c) 34 years
(d) 41 years (e) None of these

6). Who among the following is born between W and S?

- (a) U (b) Q (c) F (d) N (e) None of these

7). How many people are younger than U?

- (a) Five (b) Three (c) Four (d) Two
(e) None of these

8). Four from the following are similar in a certain way and forms a group. Find out the one, which does not belong to that group

- (a) F (b) U (c) W (d) S (e) V

Direction(9-13): Study the digit-letter sequence carefully and answer the questions given below:

Q 2 W R 6 A B P 7 L O N 8 F T M 1 U D Z 3 X S 4
I G H 5 K E C 9

9). How many consonants are there between the seventh element from the left end and tenth element from the right end?

- (a) Eight (b) Nine (c) Seven (d) Ten
(e) None of these

10). Which amongst the following element is eighth to the right of nineteenth element from the right end?

- (a) 3 (b) S (c) 4 (d) X (e) None of these

11). If all the numbers are removed from the given series then which amongst the following element is thirteenth element from the right end?

- (a) F (b) M (c) T (d) U (e) None of these

12). How many letters are there which are immediately preceded by a vowel and immediately followed by a number?

- (a) Three (b) Two (c) None (d) One
(e) None of these

- 13). What is the product of the number which is fourth from the left end and third from the right end?
(a) 28 (b) 32 (c) 30 (d) 24 (e) None of these

Direction(14-15): Study the digit-letter sequence carefully and answer the questions given below:

T 1 Y V A 9 B N 2 L P O 5 K W 4 Z D F C 6 G U 3
H 7 J E 8 M

- 14). Which amongst the following element is tenth to the right of eighteenth element from the left end?
(a) 7 (b) E (c) 8 (d) J (e) None of these

- 15). How many numbers are there which are immediately preceded by a vowel and immediately followed by a consonant?
(a) Three (b) Four (c) Two (d) Five
(e) None of these

Direction (16): Study the following information and answer the given questions.

A is walking towards the south and stops after covering 5m. Then he turns to his left and walks 10m and again turns to his right. After walking for 5m he turns to his left and walks for 7m and reaches his destination. B is standing a few meters away from the final position of A. B starts walking to his East and turns to his left after covering 5m. He walks for 2m and then turns to his right and walks for 4m. He then turns to his left and walks for 2m to reach his destination.

- 16). What is difference between the total distance covered by A and B?
(a) 11m (b) 7m (c) 14m (d) 5m
(e) None of the above

Direction(17-18): Study the following data carefully and answer the questions accordingly.

Point J is 5m south of point K and 15. East of point R. Point L is 10m north of point U. Point K is 20m west of point L. Point O is 10m north of point R.

- 17). Point J is in which direction of point U?
(a) South (b) North-West (c) South-East
(d) North-East (e) None of these

- 18). Find the odd one.
(a) J,O (b) U,J (c) U,O (d) L,O (e) K,R

Direction (19-20): Study the following data carefully and answer the questions accordingly.

There are seven members in a family with two married couples. U has a grandson. J is the aunt

of P. M is the father of L and S, who is the mother of P. Q is the brother-in-law of L, who is a son of U.

- 19). How P is related to Q?
(a) Brother (b) Son (c) Uncle (d) Grandfather
(e) None of these

- 20). How many male members are there?
(a) Five (b) One (c) Three (d) Four
(e) None of these

Direction (21-25): Study the following information carefully and answer the following question.

Nine people i. , A, B, C, D, E, F, G, H and J born on 6th, 12th and 17th of three different months i. , January, April, and July. Only one person born on each date All the information is not necessarily in the same order. J was born on an odd numbered date in the month having 31 days. Three people were born between J and A. C was born before A on an odd numbered date Three people were born between G and H. H was born in July. Only one person was born between G and B does not born on an odd numbered date Three people were born between E and E was born on an odd numbered date.

- 21). How many people were born between A and D?
(a) Two (b) More than three (c) One (d) None
(e) Three

- 22). Who was born on 17th July?
(a) E (b) H (c) A (d) F (e) None of these

- 23). F was born on which date?
(a) 6th July (b) 12th July (c) 6th January
(d) 17th April (e) None of these

- 24). Which statement is true?
I. D was born in 12th April
II. Two people were born after A
III. C was born between D and A
(a) Both II and III (b) Only I (c) Both I and II
(d) Both I and III (e) All I, II and III

- 25). Find the odd one.
(a) F (b) D (c) H (d) J (e) A

Direction(26-30): Study the following information and answer the given questions.

Ten people are sitting in two rows. In row 1 – A, B, C, D and E are sitting facing the south direction and in row 2 – U, V, W, X and Y are sitting facing

the north direction but necessarily in the same order. W sits second to the right of Y. The one, who sits opposite Y, sits immediate right of More than one person sits to the left of E sits second to the right of D but not at the end The one, who sits opposite E, sits immediate right of V. Two people sit between V and X. U does not sit opposite C.

26). Who among the following sits diagonally opposite of C?

- (a) Y (b) V (c) W (d) U (e) X

27). Who among the following sits immediately right of W?

- (a) U (b) X (c) Y (d) V (e) None of the above

28). Who among the following sits opposite of V?

- (a) C (b) A (c) B (d) E (e) D

29). Who among the following sits second to the left of B?

- (a) E (b) D (c) C (d) A (e) None of the above

30). Four of the five are alike in a certain way and thus forms a group. Find the one who does not belong to the group.

- (a) CY (b) EW (c) BV (d) DX (e) AW

Direction(31-35): Study the following information and answer the given questions.

Seven people i. A, B, C, D, E, F, and G live on a seven-floor building. The lowermost floor is numbered as 1, floor above it numbered as 2 so up to the topmost floor is numbered as 7. All the information is not necessarily in the same order. E lives on an odd numbered floor. A lives four floor below G. Number of people live above A is same as number of people live below G. B lives just below F. C lives two floors above F. Three people live between F and D.

31). Who lives on the lowermost floor?

- (a) D (b) A (c) C (d) E (e) None of the above

32). How many people are living between C and E?

- (a) Three (b) Two (c) Four (d) Five
(e) None of the above

33). Who lives on the fourth floor?

- (a) F (b) G (c) B (d) A (e) None of the above

34). C lives on the _____ floor.

- (a) Sixth (b) Fifth (c) Seventh (d) Third
(e) None of the above

35). Who among the following lives immediately below B?

- (a) A (b) D (c) F (d) E (e) None of the above

Numerical Ability

Direction (1-9): What should come in the place of question mark (?) in the following question?

1). $7 + (3\sqrt{5})^2 = ? - (\sqrt{5})^2 + 197$

- (a) -120 (b) -140 (c) 150 (d) 160 (e) -120

2). $[184 + (\sqrt{6})^2] + ? = 25 \times 12$

- (a) 110 (b) 105 (c) 125 (d) 180 (e) 110

3). $[(428 + 124) \div 23] + 15 \times 5 = ?$

- (a) 84 (b) 99 (c) 80 (d) 96 (e) 84

4). $16 + (5\sqrt{2})^2 - 121 = ? \times 5$

- (a) -15 (b) 10 (c) -11 (d) 16 (e) -15

5). $172 - 102 + 9 \times 13 = (? - 6) \times 9$

- (a) 60 (b) 50 (c) 20 (d) 40 (e) 60

6). $\sqrt{(18 + 2 \times 23)} + 122 + ? = 180$

- (a) 28 (b) 32 (c) 24 (d) 35 (e) 28

7). $[(24 + 16 \times 15) \div 11] + ? = (2\sqrt{7})^2 + 12$

- (a) 24 (b) 16 (c) 20 (d) 28 (e) 24

8). $124 + 156 - 106 + ? = 182$

- (a) 140 (b) 120 (c) 160 (d) 150 (e) 140

9). $19 \times 25 + 10\% \text{ of } ? = 490$

- (a) 150 (b) 180 (c) 120 (d) 110 (e) 190

10). Mahesh invested Rs. 28800 under compound interest at a rate of 4% for 1st year and x% for 2nd year. If the amount received at the end of 2 years is Rs. 33696 then find the value of x.

- (a) 8.5 (b) 10.5 (c) 12.5 (d) 16.25 (e) 7.25

11). A sum of money under compound interest per annum becomes Rs. 39930 in 2 years and Rs. 43923 in 3 years. Find the amount after 1 year if interest is compounded half yearly.

- (a) Rs. 34386 (b) Rs. 41625 (c) Rs. 36574.5
(d) Rs. 33900 (e) Rs. 36382.5

Direction(12-13): In the following question two equations are given in variables x and y. You have to solve these equations and determine the relation between x and y.

12). I. $2\sqrt{2}x^2 + 21\sqrt{2}x = 41\sqrt{2}x$

II. $y^3 - 5 \times 210 = 281$

- (a) $x > y$ (b) $x \leq y$ (c) $x < y$ (d) $x \geq y$
(e) $x = y$ or relationship between x and y can't be established

13). I. $5x^2 - 18x + 9 = 0$

II. $15y^2 + 22y + 8 = 0$

- (a) $x > y$ (b) $x \leq y$ (c) $x < y$ (d) $x \geq y$
(e) $x = y$ or relationship between x and y can't be established

14). Three partners A, B and C started a business together. A invested Rs. 4800, B invested Rs. Q and C invested Rs. 6400, at the starting. After a year, A increased investment by 25%, B decreased investment by 20% and C decreased investment by Rs. 200. At the end of two years, A received total profit of Rs. P out of total profit of Rs. 36000.

Which of the following can be the value of P and Q, respectively?

- a. 10800, 7000
9000, 11000
12000, 5000

- (a) Only a and b (b) Only b and c (c) All a, b and c
(d) Only b (e) Only c

15). Vaishali and Amravati express are running in opposite direction to each other, crosses an electric pole in 15 sec and 10 sec respectively and they cross each other in 12 seconds. Find the ratio of their speed.

- (a) 2 : 3 (b) 6 : 5 (c) 4 : 5 (d) 3 : 4 (e) 7 : 5

16). Manan can complete a piece of work in 24 days while Komal can complete it in 40 days. They work together for 8 days and the rest work is completed by Akshay in 7 days. If they get Rs. 2400 for the

whole work, find the share of Manan, Komal and Akshay respectively.

- (a) Rs. 600, Rs. 700, Rs. 1100
(b) Rs. 800, Rs. 600, Rs. 1000
(c) Rs. 600, Rs. 540, Rs. 1260
(d) Rs. 750, Rs. 450, Rs. 1200 (e) None of these

17). A boat can row 36 km upstream and 44 km downstream in 10 hours, while it can row 33 km upstream and 16.5 km downstream in 7 hours. Find the speed of the boat in still water.

- (a) 10.8 km/h (b) 9.6 km/h (c) 8.5 km/h
(d) 7.2 km/h (e) 5.5 km/h

18). A and C together can complete a piece of work in 30 days while B alone can complete the same work in 35 days. B is 20% more efficient than that of A. If A started the work alone and worked for 18 days, find the time taken by B and C together to complete the remaining work.

- (a) 18 days (b) 16 days (c) 12 days (d) 15 days
(e) 10 days

19). Product of two third of a number and 125% of another number, is what percent of the product of these two numbers?

- (a) $82\frac{2}{3}\%$ (b) $83\frac{2}{3}\%$ (c) $83\frac{1}{3}\%$ (d) 83%

- (e) None of these

20). The difference between the present age of Rahul and Rohit is 10 years. The ratio between their age six years ago was 3 : 2. What is the present age of Rohit?

- (a) 26 years (b) 24 years (c) 28 years
(d) 32 years (e) None of these

21). What is the minimum number of identical square tiles required to completely cover a floor of dimensions 12 m 80 cm \times 7 m 20 cm?

- (a) 60 (b) 72 (c) 120 (d) 144 (e) None of these

22). A father decided to distribute _____ gold coins among his three sons Avneet, Srijeet and Srikant in the ratio of 3 : 4 : 5, but mistakenly distributed in the ratio of 4 : 5 : 6 and Srikant received _____ less/more gold coins than he was supposed to receive.

The values given in which of the following options will fill the blanks in the same order in which it is given to make the statement true:

- I. 1200, 20
II. 900, 15
III. 1500, 30

- (a) Only I (b) Only II (c) Only III (d) Only I and II
(e) Only I and III

23). An article having cost price Rs. $(x + 120)$ is marked up 25% above its cost price. The article is then sold at certain discount such that ratio of marked price to that of its selling price is 5 : 3. Find the selling price of the article such that there is a loss of Rs. 120 in the transaction.

- (a) Rs. $(2x - 240)$ (b) Rs. $(x + 40)$
(c) Rs. $(1.5x - 180)$ (d) Rs. $(0.75x + 20)$
(e) None of these

24). Two pipes A and B can fill a tank in 32 minutes and 48 minutes respectively. If they are turned on alternately for one minute each starting with A, then what is the time taken to fill the tank?

- (a) 38 minutes and 20 seconds
(b) 38 minutes and 40 seconds
(c) 39 minutes and 20 seconds
(d) 39 minutes and 40 seconds (e) None of these

Direction (25-29): In the following number series, only one number is wrong.

25). Find out the wrong number.
689, 473, 348, 284, 257, 251

- (a) 251 (b) 473 (c) 257 (d) 284 (e) 348

26). Find out the wrong number.
47, 49, 62, 99, 165, 277

- (a) 277 (b) 99 (c) 165 (d) 62 (e) 49

27). 113, 120, 137, 174, 233, 328

- (a) 137 (b) 233 (c) 174 (d) 328 (e) 120

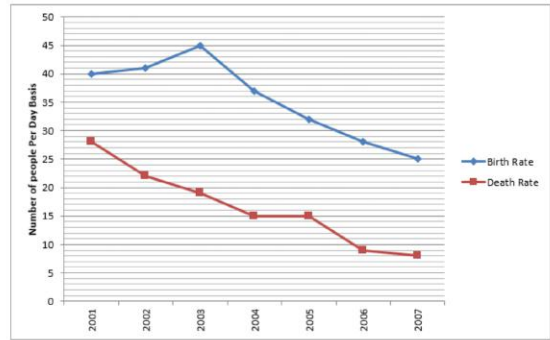
28). 53, 73, 109, 152, 211, 283

- (a) 211 (b) 152 (c) 73 (d) 109 (e) 283

29). 178, 207, 194, 223, 214, 239

- (a) 207 (b) 194 (c) 223 (d) 239 (e) 214

Directions(30-35): Read the following information carefully and answer the questions that follow:
The Birth rate and Death rate statistics of State A have been shown in the following line graph:



Note:

- 1) The rates given are the average number of births/deaths in a day for the given year.
2) Assume all years have 365 days

30). The total number of people who died in 2002 is what percentage more/less than the total number of people who were born in 2004? (Approximate your answer)

- (a) 52% (b) 40% (c) 34% (d) 16% (e) 28%

31). What is the difference between the total number of people born in year 2007 and the total number of people born in year 2005?

- (a) 3250 (b) 2400 (c) 2675 (d) 2555 (e) 3412

32). What is the ratio of the total number of people who died in year 2006 to the total number of people born in year 2003?

- (a) 5 : 1 (b) 1 : 4 (c) 1 : 5 (d) 4 : 1 (e) 4 : 7

33). If the death rate in year 2004 increased by 20%, how many people would have died that year?

- (a) 6570 (b) 6840 (c) 7420 (d) 7360
(e) None of these

34). If the birth rate of 2005 decreased by 5%, then how many people would have been born that year? (Approximate your answer)

- (a) 18455 (b) 13505 (c) 11096 (d) 16872
(e) None of these

35). What would be the average of the total number of people dead in the years 2006 and 2007? (Approximate your answer)

- (a) 2700 (b) 2525 (c) 3102 (d) 4521
(e) None of these

English Language

Direction(1): Read the sentence to find out whether there is an error in it. The error, if any, will be in one part of the sentence. The number corresponding to that part will be your answer. If

the given sentence is correct as it is, mark the answer as 'No error'. Ignore the errors of punctuation, if any.

- 1). Deliveries of food aid (1)/ to Myebon's Muslims have been (2)/ delayed and are only allowed after (3)/ inspections to Buddhist community representatives. (4)

(a) 1 (b) 2 (c) 3 (d) 4 (e) No error

Direction(2-3): The given question contains one statement that is divided into five parts, out of which the first part is correct. There is some error in the three of the remaining four parts of the statement, while one part is correct. The correct part is your answer. In case all the parts are incorrect, the last option is your answer.

- 2). It has always been/ difficult with the political/ machinery to meshing with/ the judiciary because/ of the conflicts of interest.

(a) difficult with the political
(b) machinery to meshing with
(c) the judiciary because
(d) of the conflicts of interest (e) All are incorrect

- 3). Removing the trash from/ the street was being always/ consideration a prerequisite/ for improvement the overall/ ambience of the city.

(a) the street was being always
(b) consideration a prerequisite
(c) for improvement the overall
(d) ambience of the city (e) All are incorrect

Direction(4): Read the sentence to find out whether there is an error in it. The error, if any, will be in one part of the sentence. The number corresponding to that part will be your answer. If the given sentence is correct as it is, mark the answer as 'No error'. Ignore the errors of punctuation, if any.

- 4). Police said that (1)/ the seized counterfeit currency notes looked (2)/ so genuine that (3)/ anyone could have been misled (4)

(a) 1 (b) 2 (c) 3 (d) 4 (e) No error

Direction(5-9): In the given question, four words are printed in bold and are numbered 1, 2, 3 and 4. Of these, the positions of two of these words may be incorrect and need to be exchanged to make the sentence correct. Find the two words which need to be exchanged. In case the given sentence is correct, your answer is (E), i. 'No exchange required'.

- 5). The rescue (1) operation continued (2) for three days, at the end (3) of which, the number (4) of casualties stood at 92.

(a) 1-2 (b) 2-4 (c) 1-3 (d) 3-4
(e) No exchange required

- 6). Three-quarters of people in the world's priorities (1) nations believe tipping (2) are pushing the planet towards a dangerous humans (3) point and support a shift of wealthiest (4) away from economic profit.

(a) 1-3 and 2-4 (b) 1-4 (c) 3-4 (d) 1-4 and 2-3
(e) No exchange required

- 7). Sudoku became mental (1) outside Japan around two decades ago after overseas (2) newspapers began printing the puzzles (3) and is now praised as a way to keep popular (4) faculties sharp.

(a) 1-4 (b) 2-4 (c) 3-4 (d) 2-3
(e) No exchange required

- 8). Research accompanying (1) that water problems – drought, with its suggests (2) wildfires, and flooding – are likely to become (3) much worse around the world as climate breakdown (4) takes hold.

(a) 1-2 (b) 1-3 (c) 1-4 (d) 2-3
(e) No exchange required

- 9). By midday (1) on Monday, heavy rain was already (2) lashing the city and flash (3) floods and mudslides (4) were expected to affect road travel.

(a) 1-2 (b) 2-4 (c) 1-3 (d) 3-4
(e) No exchange required

Direction (10-14): In the given question, a part of the sentence is printed in bold. Below the sentence three alternatives to the bold part are given which may help improve the sentence. Choose the option that reflects the correct use of the phrase in the context of the sentence. In case the given sentence is correct, your answer is (E) i. No correction required.

- 10). Ooty is a small hilly town, 86 km away from the Nilgiri District in Tamil Nadu, and is known for its picturesque landscapes.

I. Ooty in Tamil Nadu is known for its
II. from Ooty into Tamil Nadu is known for its
III. for Ooty in Tamil Nadu is known for its

(a) Only I (b) Only II (c) Only III (d) II and III
(e) No correction required.

- 11). The increasing prices of edible oils has been the major bone of contention among the citizens and the central government.

I. has been the major bone of contention between
II. has been a major bone of contention among
III. have been a major bone of contention between

- (a) Only I (b) Only II (c) Only III (d) II and III
(e) No correction require

12). Ranjini turned back and slowly pulled the blanket around her shoulders and curled up a shivering ball.

- I. around her shoulders and curled up to a shivering ball
II. around her shoulders and curled up in a shivering ball
III. around her shoulders and curled into a shivering ball

- (a) Only I (b) Only II (c) Only III (d) II and III
(e) No correction require

13). Neither Rishav or his sister expected their dad to take them to camp by the lakeside.

- I. either Rishav nor his sister
II. neither Rishav either his sister
III. neither Rishav nor his sister

- (a) Only I (b) Only II (c) Only III (d) Both I and II
(e) No correction required

14). Many a workers are protesting after they were cumulatively fired from the factory.

- I. A great many workers are protesting
II. Many a worker are protesting
III. Many a worker is protesting

- (a) Only I (b) Only II (c) Only III (d) I and III
(e) No correction require

Direction(15-22): Read the given passage and answer the questions that follow. Certain words are printed in bold to help you locate them while answering some of these

Boredom indicates a mind at peace with itself; a blank canvas that can spark creativity and contemplation. It is likely to lead to considered action or engaging activity that the subject finds meaningful (as opposed to the meaningless activity used to "fill" empty time). Conversely, the intense restlessness mistaken for boredom in the social media age indicates a deficiency of mental wellness. It is linked to a higher incidence of depression and anxiety, as well as behaviours that we might consider maladaptive, says Dr. X, a professor at the University of Canada, and who has co-authored a book on the psychology of boredom.

"The boredom-prone demonstrate higher levels of aggression and sensation-seeking, which can lead to unwanted outcomes," he says. If we can recognise and try to avoid succumbing to the agitation and restlessness that so often accompanies feelings of boredom today, then we

give ourselves a chance to choose more positive reactions to the experience

The response to boredom has changed over time used to be: let me find something fun to do. Now it's a desperate grab for empty mental calories.

"Today, when we feel bored we also feel threatened in some sense. Boredom suggests to us that we are not being particularly effective at that moment," he says. Instead of a panic response, boredom needs to be turned back into something constructive

In his book, he writes of the difference between free time and "freed time" — the former being time that we fill unthinkingly with something mindless; the latter being the time that we claim and spend doing something we choose. "It's difficult to defend our freed time but it's crucial to learn how to do it," he says.

Proof that social media isn't the answer lies in the ennui that often sets in while scrolling, like the regret of eating the last of a large bag of chips. He states, "It's irrelevant how many stimuli we have. The core of the issue is _____ we are conscious of how we use our time"

15). Which of the following is true as per the passage?

I. As per the passage, it is very difficult to defend free time.

II. There is no difference between the free time and 'freed time'.

III. Instead of panicking, we must turn boredom into something constructive

- (a) Only I (b) Both I and III (c) Only III
(d) Both I and II (e) All I and II

16). Which of the following is not true as per the passage?

I. Boredom now means the attempt to grab empty mental calories.

II. In the era of social media, the intense restlessness means boredom.

III. Boredom can never lead to creative pursuits.

- (a) Only I (b) Only II and III (c) Only III
(d) Both I and III (e) All I, II and III

17). What does the author mean by 'freed time' as per the passage?

(a) The time we spend doing something meaningless and aimless.

(b) The time we spend doing something we want to do.

(c) The time we spend disturbing others by meaningless objects.

(d) The time we spend scrolling different types of social media.

(e) The time we feel guilty after having a bag of chips.

18). Which of the following word has the same meaning as the word highlighted in the passage?
Spark

- (a) Participate (b) Figure (c) Stimulate (d) Aim
(e) Prepare

19). Which of this word has a similar meaning with the word highlighted in the passage?

Lies

- (a) Allows (b) Exists (c) Surprises (d) Tackles
(e) Defeats

20). Which of the following words will fill in the blank in the passage?

- (a) how little (b) many (c) only to
(d) in respective of (e) according to

21). According to the passage, boredom leads to _____?

- (a) Higher level of aggression leading to unwanted activity
(b) Extreme level of calmness and meditative actions
(c) Increase in activities which are creatively engaging
(d) Less amount of depression and unhappiness
(e) People spend lesser time on social media.

22). Which of the following way people counters boredom nowadays?

I. To do productive things and engage in creative pursuits.

II. To engage in physical activities for being healthy.

III. To scroll through social media in order to consume empty calories.

- (a) Only I (b) Both I and III (c) Only III (d) Only II
(e) All I, II and III

Direction(23-26): In the following question, a sentence with four words printed in bold is given. These words are numbered as (1), (2), (3) and (4). One of these four words may either be misspelt or inappropriate in the context of the sentence Find out the word(s) that is wrongly spelt or inappropriate and mark the relevant option as your answer. If all the words printed in bold are correct, mark option (E), i. 'All are correct', as the answer.

23). The equestrian (1) ensured that the horses (2) were well take care of before enlistning (3) them for the rac(4)

- (a) 1 (b) 2 (c) 3 (d) 4 (e) All are correct

24). He was confidant (1) that his presentation (2) had impressed (3) the client into negotiating (4) a deal.

- (a) 1 (b) 2 (c) 3 (d) 4 (e) All are correct

25). The group (1) of friends could hardly (2) recognise there (3) school when they returned (4) there ten years later.

- (a) 1 (b) 2 (c) 3 (d) 4 (e) All are correct

26). The boring (1) lecture made it dificult (2) for even the most scholarly (3) students to fall asleep. (4)

- (a) 1 (b) 2 (c) 3 (d) 4 (e) All are correct

Direction(27-30): In the following question, a sentence with four words printed in bold is given. These words are numbered as (1), (2), (3) and (4). One of these four words may either be misspelt or inappropriate in the context of the sentence Find out the word(s) that is wrongly spelt or inappropriate and mark the relevant option as your answer. If all the words printed in bold are correct, mark option (E), i. 'All are correct', as the answer.

27). Rearrange all the segments to form a coherent statement.

- A) the Labour and Employment Ministry's
B) workers crossed 1 crore registrations
C) on September 18, less than a
D) portal for unorganised sector
E) month since it was launched

- (a) ACBDE (b) ADBCE (c) ABCDE (d) BDCEA
(e) DCBEA

28). A) World Cleanup Day is a

- B) social action programme
C) including marine debris
D) observed globally to combat
E) the problem of solid waste,

- (a) BCDEA (b) ACBDE (c) ABCDE (d) DECAB
(e) ABDEC

29). A) Mahatma Gandhi University

- B) for awarding degree certificates
C) has issued a circular, making
D) it is learnt that the
E) anti-dowry declaration a must

(a) ABCDE (b) BADCE (c) ACDEB (d) DACEB
(e) BCDEA

30). A) wielding simple bows, arrows, axes and
B) the world's largest empire in the

C) knives, the Great Andamanese warriors took on

D) Battle of Aberdeen in 1859 and laid down

E) their lives defending their ancestral land

(a) ACBDE (b) ADBCE (c) ABCDE (d) BDCEA
(e) DCBEA

