

DO NOT OPEN THE SEAL OF THE BOOKLET UNTIL YOU ARE TOLD TO DO SO

RRB ALP

TEST SERIES

DATE- __/__/__

DAY- _____

INSTRUCTION FOR CANDIDATE

TEST SERIES NO.

SG Set 05

QUESTION- 75

MARKS- 75

NEGATIVE MARK- 1/3

DURATION- 60 MIN.

1. USE ONLY BALL PENS WITH BLACK OR BLUE INK
2. AS SOON AS THE EXAMINATION STARTS, YOU MUST CHECK THIS QUESTION BOOKLET AND IF THERE IS ANY UNPRINTED, MUTILATED OR PARTIALLY PRINTED PAGE OR QUESTION IN IT, THEN REPLACE IT WITH THE CORRECT QUESTION BOOKLET THROUGH THE EXAMINER.
3. THERE ARE A TOTAL OF 75 QUESTIONS IN THIS QUESTION BOOKLET.
4. THIS IS AN OBJECTIVE TEST, IN WHICH FOUR OPTIONS ARE GIVEN FOR THE ANSWER TO EACH QUESTION, YOU HAVE TO CHOOSE ONLY ONE OPTION WITH THE CORRECT ANSWER OUT OF THESE FOUR OPTIONS.
5. ANSWERS TO ALL QUESTIONS ARE TO BE WRITTEN ON SEPARATE ANSWER SHEETS.

6. INSTRUCTIONS FOR FILLING THE ANSWER SHEET ARE WRITTEN ON THE BACK SIDE OF THE ANSWER SHEET, READ THEM CAREFULLY BEFORE FILLING THE ANSWER SHEET.
7. BLANK PAGES ARE AVAILABLE IN THIS QUESTION BOOKLET FOR ROUGH WORK.
8. CANDIDATES CANNOT LEAVE THE ROOM BEFORE THE END OF THE EXAMINATION.
9. AFTER THE EXAMINATION IS OVER, YOU CAN GO OUT ONLY WITH HIS PERMISSION AFTER SUBMITTING THE ORIGINAL COPY OF THE ANSWER SHEET TO THE INVIGILATOR.
10. AFTER THE COMPLETION OF THE EXAMINATION, THE CANDIDATE IS ALLOWED TO TAKE THE QUESTION BOOKLET AND ANSWER SHEET WITH HIM/HER.
11. 1 MARKS WILL BE GIVEN FOR EACH CORRECT ANSWER AND 1/3 MARKS WILL BE DEDUCTED FOR EACH WRONG ANSWER.



10 Years of Excellence

Spardhaguru India Private Limited

Website:- www.spardha.guru

Email ID:- info@spardha.guru

ADDRESS:- No 8, 24th Block Manasi Nagar Beside of Bliss serviced Apartment, Mysuru, Karnataka 570029

HELPLINE 90711 54445, 90711 64446, 90711 74447

Total: 75 Que.

RRB ALP CBT I Set 05

Time: 60 Min.

RRB ALP CBT I

- 1). You have a question followed by two statements. Which of the following statement(s) is/ are required /sufficient to answer the question?

Question :

What is the total weight of 20 boxes of vegetables? Each of them is of equal weight.

I. Of 10 boxes, one third of each box weighs 10kg.

II. Total weight of 6 boxes is 60kg more than that of 4 boxes.

- (a) Only statement I is sufficient.
(b) Only statement II is sufficient.
(c) Both statements I and II are not sufficient.
(d) Either statement I or II is sufficient.

- 2). The ratio of the mass of hydrogen to the mass of oxygen is always

- (a) 2:1 (b) 8:1 (c) 1:2 (d) 1:8

- 3). As long as an unbalanced force is applied to a body, its ____ continues to change continuously.

- (a) Mass (b) Shape (c) Speed (d) Weight

- 4). Which is the first city of India using robot to control traffic?

- (a) Kochi (b) Jaipur (c) Varanasi (d) Indore

- 5). The outer shell of which group of elements is complete in the modern periodic table?

- (a) 16th (b) 18th (c) 17th (d) 15th

- 6). The force of gravity acting on an object is also known as ____.

- (a) impulse (b) weight (c) acceleration
(d) Mass

- 7). $56 \div \frac{1}{3} \{15 + 12 - (9 + 6 - 5 + 7)\} = ?$

- (a) 8 (b) 9 (c) 7 (d) 12

- 8). Who played the role of Alauddin Khilji in the controversial film 'Padmaavat'?

- (a) Shahid Kapoor (b) Ranbir Kapoor
(c) Rana Daggubati (d) Ranveer Singh

- 9). Which of the following is a perfect cube.

- (a) 9361 (b) 8000 (c) 9000 (d) 9999

- 10). Select the person who is not related to a similar group.

- (a) Albert Einstein (b) Tomas A. Edison
(c) Virat Kohli (d) Alexander Graham Bell

- 11). ____ is the amount of work done in carrying a charge of 4 C across two points having a potential difference of 18 V.

- (a) 4.5J (b) 24J (c) 72J (d) 7.2 J

- 12). When an object moves on a circular path, the force that is exerted on the rotating object is called

- (a) Simple force (b) Gravitational force
(c) Angular force (d) Centripetal force

- 13). Which of the following is known as 'the Princess of Hill Stations'?

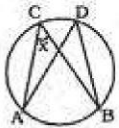
- (a) Darjeeling (b) Ooty (c) Kodaikanal
(d) Dehradun

- 14). Study the following question and decide that which of the following information is sufficient to answer the question?

What is the value of $\angle ACB$?

Information:

(I)

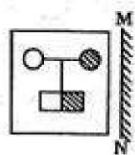


II. $\angle D = 60^\circ$

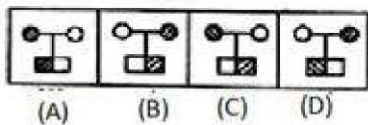
- (a) Either I or II is sufficient (b) Only II is sufficient
(c) Both I and II are sufficient
(d) Only I is sufficient

- 15). Which of the following is the correct mirror image of the given figure when the mirror is placed at line MN?

Question Figure:



Answer Figures:



- (a) C (b) A (c) B (d) D

- 16). Which of the following assumptions is implicit in the statement?

Statement:

Student 1 said to student 2, "I need your notes for reading".

Assumptions

I. Student 2 has made notes.

II. Student 1 wishes to prove his understanding.

- (a) Neither I nor II is implicit
(b) Both I and II are implicit (c) Only II is implicit

- (d) Only I is implicit

- 17). Which of the following animals is warm-blooded?

- (a) Fish (b) Crocodile (c) Toad (d) Pigeon

- 18). Which of the following animals can produce ultra sound?

- (a) Insect (b) Elephant (c) Shark
(d) Porpoises

- 19). Which of the following options is an example of a salt, the pH of aqueous solution of which is less than 7?

- (a) Ammonium chloride (b) Sodium bicarbonate
(c) Sodium chloride (d) Sodium carbonate (e) 1

- 20). Which union minister has launched Power Tax India scheme to boost power loom sector?

- (a) Smriti Irani (b) Maneka Gandhi
(c) Nitin Gadkari (d) Rvai Shankar Prasad

- 21). Swami Dayananda Saraswati was the founder of which of the following missions?

- (a) Arya Samaj (b) Chinmaya Mission
(c) Brahmo Samaj (d) Prarthana Samaj

- 22). How many water molecules are present in one molecule of washing soda?

- (a) 10 (b) 8 (c) 7 (d) 5

- 23). The statement given below is followed by two assumptions I and II. Consider the statement and assumptions a decide which of the assumptions is implicit in the statement?

Statement:

The supply of energy to households is necessary for sustain. able development.

Assumptions:

I. Compact Fluorescent Lamp (CFL) should be used in the houses in the place of more bright light bulbs.

II. One should grow shady trees and plants around the house. Energy can be conserved by such land use (specifically deciduous trees), particularly if trees are planted to the west of house.

- (a) Only assumption I is implicit.
(b) Both the assumptions I and II are not implicit.
(c) Only assumption II is implicit.
(d) Both the assumptions I and II are implicit.

24). The flexibility in plants is due to _____ tissue.

- (a) xylem (b) collenchyma (c) sclerenchyma
(d) phloem

25). If PIPE is written as 169165 then what will be the code of last letter of SWAN?

- (a) 3 (b) 4 (c) 6 (d) 5

26). Two trains 152.5 m and 157.5 m long, running in opposite directions, cross each other in 9.3 seconds. What will be the combined speed of both trains per hour?

- (a) 130 km (b) 120 km (c) 125 km (d) 115 km

27). 'Journey towards Developed India' was inaugurated in which cities?

- (a) Delhi (b) Jaipur (c) Mumbai (d) Pune

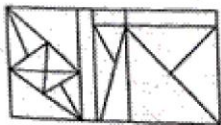
28). The chemical symbol of which of the following elements has been derived from Latin?

- (a) Iron (b) Carbon (c) Chlorine (d) Aluminium

29). Which of the following is not a pair of prime numbers?

- (a) (71, 72) (b) (3, 7) (c) (37, 41) (d) (43, 47)

30). How many triangles are there in the figure given below?



- (a) 25 (b) 23 (c) 27 (d) 24

31). The fertilised egg, the zygote, gets implanted in the:

- (a) Cervix (b) Uterus (c) Ovary (d) Vagina

32). Who among the following has won the Belgian Grand Prix?

- (a) Max Verstappen (b) Lewis Hamilton
(c) George Russell (d) None of the above

33). The resistance of a conductor does NOT depend on which of the following factors?

- (a) Material (b) Length (c) Pressure
(d) Area of cross section

34). Study the given statements and Conclusions, carefully and select that Conclusions which follow(s) the statement logically.

Statements :

All cars are jeeps.

All jeeps are four-wheelers.

Conclusions :

I. All four-wheelers are cars.

II. Some four-wheelers are jeeps.

- (a) Only Conclusion II follows
(b) All the Conclusions follow
(c) Only Conclusion I follows
(d) None of the Conclusions follows

35). Consider the given statement and decide which of the following assumptions is/are implicit in the statement.

Statement :

"Every city must house an ecological park", says the Mayor to his secretary.

Assumptions :

I. Ecological parks improve green cover.

II. Ecological parks help reduce air pollution.

- (a) Only II is implicit. (b) Both I and II are implicit.
(c) Neither I nor II is implicit. (d) Only I is implicit.

36). If $\left(\cos^2 \phi + \frac{1}{\cos^2 \phi}\right) + 17 = x$, then what is the value of x^2 ?

- (a) 256 (b) 324 (c) 16 (d) 18

37). Two inlet pipes A and B can fill an empty tank in 22 and 33 hours respectively. They are opened together but pipe A is turned off 3 hours before the tank is filled. How many hours are required to fill the tank completely by both pipes?

- (a) 14.2 (b) 16 (c) 16.2 (d) 15

38). After selling a pen for Rs. 144, Anurag incurs a loss equivalent to $\frac{1}{7}$ of cost price. If the pen had been sold for Rs. 189, what would have been the profit percent?

- (a) 11.5% (b) 12.5% (c) 14% (d) 11%

39). In which of the following reactions is oxygen released into air?

- (a) Transpiration (b) Photosynthesis
(c) Respiration (d) Excretion

40). A clock is fixed on a horizontal table. At 3 pm its minute hand is pointing towards North. At 3.40 pm, the minute hand will point towards?

- (a) South-west (b) South-east
(c) 60° south of west (d) 60° west of south

41). Which of the following metals reacts with vapour to form metal oxide and Hydrogen?

- (a) Copper (b) Lead (c) Silver (d) Aluminium

42). Generally, the valency of electropositive elements is:

- (a) 4 (b) 0 (c) 1 (d) 2

43). Which of the following is an example of Newton's Third Law of Motion?

When a bus suddenly starts, the passengers tend to be jolted backward

- (a) When a bus suddenly starts, the passengers tend to be jolted backward
(b) Launch of rocket

(c) While catching a fast moving cricket ball, a fielder gradually pulls his hand backwards with the moving ball

(d) When we stop pedaling, the bicycle gets slower

44). The work done in physics is defined

- a. By force applied on an object, which cannot displace the object
b. By displaced object
c. By force applied on the object
d. All of the above given as options

(a) Both b and c are correct

(b) Both a and c are correct (c) Only d is correct

(d) Both a and b are correct

45). What would be the next term of the following series?

B25Y, D23W, F21U, _____

- (a) I19V (b) H20V (c) I20T (d) H19S

46). A type of reproduction in which a part of a plant body develops into a new individual is called _____

- (a) Sexual propagation (b) Fission
(c) Regeneration (d) Vegetative propagation

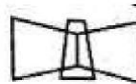
47). Which of the following dates in March 2005 were Fridays?

- (a) 6, 13, 20 and 27 (b) 5, 12, 19 and 26
(d) 4, 11, 18 and 25

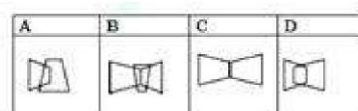
(c) 3, 10, 17 and 24

48). Which of the following alternative figures is similar to problem figure?

Problem Figure:



Alternative Figures:



(a) B (b) C (c) D (d) A

49). In which country is Academy Award (Oscar) organized every year for best performances in the field of cinema?

(a) UK (b) USA (c) France (d) Canada

50). Rohan and Rohit together can finish a work in 10 days while Rohan alone can complete the same work in 15 days. In how many days will Rohit alone do the same piece of work?

(a) 25 days (b) 35 days (c) 30 days
(d) 32 days

51). Which of the following state governments started Quit India Movement-2 (Swaraj Se Suraj) initiative at the his toric August Kranti Maidan in August 2016?

(a) West Bengal (b) Madhya Pradesh
(c) Maharashtra (d) Haryana

52). A force increases the speed of body of mass 1.0 kg from 4 m/s to 8 m/s. The work done by force is

(a) 24J (b) 8J (c) 32J (d) 16J

53). Between which countries was the Hundred Years' War fought?

(a) England and Germany
(b) Germany and France (c) England and Italy
(d) England and France

54). What will be the area of triangle whose vertices are (1, 2) (-4, -3) and (4, 1)?

(a) 10 sq. units (b) 7 sq. units (c) 20 sq. units
(d) 14 sq. Units

55). What is the mass of earth?

(a) 6×10^{-24} kg (b) 6×10^{24} kg.
(c) 6×10^{-23} kg. (d) 6×10^{23} kg.

56). Which of the following countries has the longest coastline in the world?

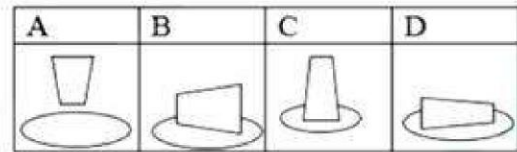
(a) Norway (b) Indonesia (c) Australia
(d) Canada

57). Which of the following answer figures appears like the problem figure?

Problem Figure:



Answer Figures:



(a) C (b) A (c) D (d) B

58). In which of the following media does sound travel the fastest?

(a) Vacuum (b) Gases (c) Solids (d) Liquids

59). Which of the following tennis players has announced retirement after the 'Paris Olympics'?

(a) Rohan Bopanna (b) Rafael Nadal
(c) Roger Federer (d) Niki Kalianda Poonacha

60). Which award is given to the workers in recognition of their distinguished performances, innovative abilities, outstanding contribution in the field of productivity and exhibition of exceptional courage and presence of mind?

(a) Padma award (b) Dronacharya award
(c) Krishi award (d) Labor award

61). If the number $x4461$ is exactly divisible by 11, what is the value of x ?

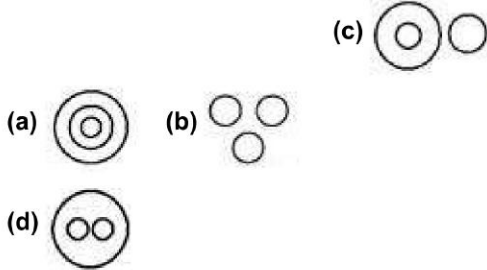
(a) 3 (b) 2 (c) 4 (d) 5

62). Which of the following is known as the upper house of Indian parliament?

(a) Rajya Sabha (b) Lok Sabha
(c) Supreme Court (d) Prime Minister's Office

- 63). Which of the following venn diagrams represents the correct relationship between the given classes?

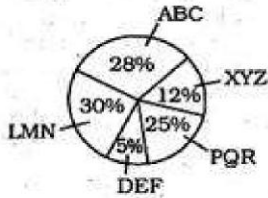
Horse, Monkey, Tiger



- 64). Who among the following has become the youngest and fastest swimmer to cross the English Channel?

(a) Bhawana Kanth (b) Jiya Raj (c) Shitala Soni
(d) Meenakshi Singh

- 65). In the following pie-chart, information about mobile phone manufacturing companies has been given. The total number of manufactured mobile phones is 1240000.



How many mobile phones were manufactured by company 'LMN'?

(a) 1240000 (b) 612000 (c) 620000
(d) 372000

- 66). President Ram Nath Kovind felicitated _____ exceptional women achievers at the Rashtrapati Bhawan in New Delhi. These 'First Ladies' have been the first to set a mile stone in their respective fields.

(a) 111 (b) 113 (c) 114 (d) 112

- 67). Find the odd one

$\frac{T}{I}$	$\frac{V}{\wedge}$	$\frac{N}{N}$	$\frac{A}{\nabla}$
A	B	C	D

(a) D (b) C (c) B (d) A

- 68). What will be the compound interest on a sum of Rs.160000 for 2 years at the annual rate of 10%, if the interest is compounded half yearly?

(a) Rs. 34400 (b) Rs. 30000 (c) Rs. 34481
(d) Rs. 34480

- 69). How many of the following medals were won by Indian competitors in the recently concluded 54th International Physics Olympiad?

(a) 4 (b) 6 (c) 5 (d) 7

- 70). It was Monday on 1st January 2018. What was the day of the week on 1st January 2010?

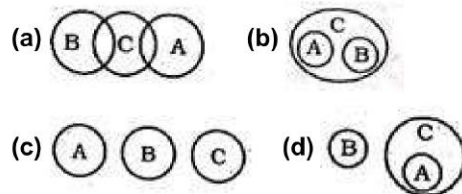
(a) Friday (b) Monday (c) Tuesday
(d) Thursday

- 71). With which sport is Satyawart Kadian associated?

(a) Football (b) Hockey (c) Wrestling
(d) Kabaddi

- 72). Which of the following Venn diagrams correctly represents the relationship between the given classes?

A. Whale
B. Ship
C. Ocean



- 73). Which of the following can exist in solid, liquid and gaseous forms?

(a) Metals (b) Inert elements (c) Metalloids
(d) Non-metals

- 74). Find the next term of the following series:

51, 7J, 11L, 17O, ?

(a) 18C (b) 20P (c) 25S (d) 25Y

(a) Clockwise (b) Counter-clockwise

(c) Parallel to the flow of rent

(d) Perpendicular to the of current

75). What will be the direction of the magnetic field at the very bottom point of a horizontal power line, where the current flows from east to west when viewed from the west end?