

Directions (1 - 5):

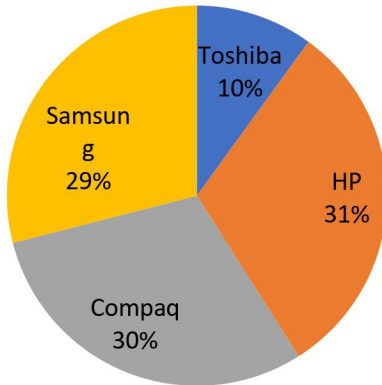
Based on the data given on the pie-chart.

Solve the questions which follow :

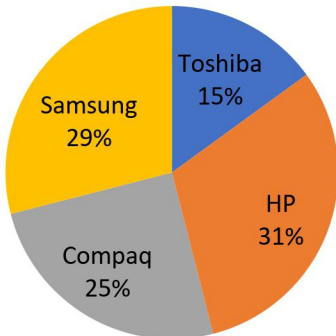
Percentage Sales of different models of Computers in Kolkata in two different years

. Given total sales in 1998 is 7890 and increase 16.5% in 1999.

1999



1998



1) The percentage change in the sales of Toshiba in 1999 is approximately

- a) 16% b) 61%
c) 22% d) 68%

2) Which brand of computers among those shown, exhibited the second highest rate of growth in two years and had less sales in 1999 than 1998 ?

- a) HP b) Compaq
c) Samsung d) All of These

3) What is the ratio between Compaq sales in 1998 and those IBM in 1999 ?

- a) 0.94 b) 1.06
c) 1.13 d) 0.89

4) For which brand of computers, did the sales increase the maximum in terms of absolute value between the two years ?

- a) IBM b) Samsung
c) HP d) Compaq

5) IBM's Sales in 1998 is what percentage of sales of Samsung in 1999?

- a) 46.34% b) 52.34%
c) 57% d) 60.8%

Directions (6 - 10):

The cumulative bar chart below gives us the production of four Products A, B, C and D for four years. It is known that the total production increases @20% over its value



spardhaguru2022



Spardhaguru Current affairs



Spardhaguru1



SpardhaGuru



Spardha.guru

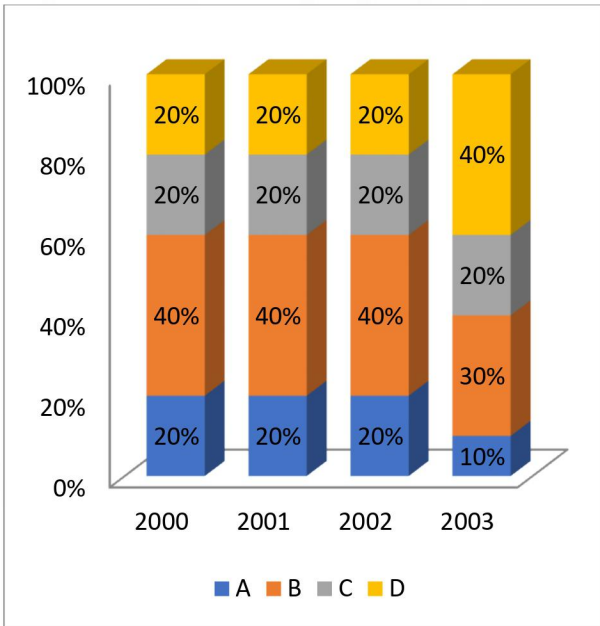


www.spardha.guru



in the previous year. The difference between C's production in 2003 and A's production in 2001 is 2640 units.

Production of A, B, C and D.



6) If the price of B is Rs.125 per unit, what is the sales revenue in the same year due to sale of B (in rupees Lakhs)

- a) 15 lakh b) 12.5 lakh
c) 20 lakh d) 25 lakh

7) Assuming no pile up of inventory at the beginning or the end of the year, what is the ratio of the number of units of C produced in these four years ?

- a) 120 : 175 : 260 : 228
b) 125 : 135 : 240 : 224
c) 125 : 165 : 270 : 216
d) 175 : 150 : 180 : 216

8) If the price of four products is in ratio of 3:5:7:8, what is the ratio of the revenue generated by these products in 2002 ?

- a) 6 : 15 : 21 : 16 b) 4 : 10 : 14 : 9
c) 9 : 16 : 24 : 20 d) 3 : 10 : 7 : 8

9) if due to extra set up time required, the production in 2001 drops by 12.5% over that in 2000, what should be the growth rate of production in 2002 to maintain the compounded annual growth rate (CAGR) of 20% (Approx) ?

- a) 56% b) 48%
c) 52% d) 65%

10) which of the following is not true ?

- a) In the given period, the maximum number of units p
b) In 2003, the number of units of C produced was th
c) The only product that does not show an increasing
d) None of these

Directions (11 - 15)

Study the graph and answer the questions: Expenditure (in lakhs) of three different Company in five Different year





spardhaguru2022



Spardhaguru Current affairs



Spardhaguru1



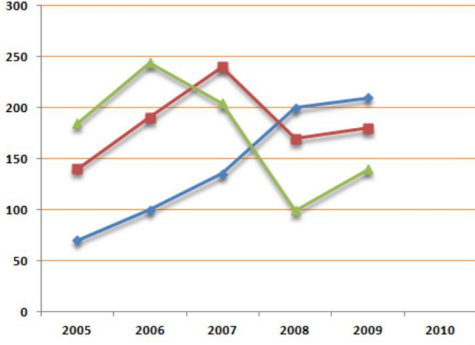
SpardhaGuru



Spardha.guru



www.spardha.guru



11) What was the overall average expenditure of company C in all the years to

- a) Rs. 190 lakhs
- b) Rs. 120 lakhs
- c) Rs. 180 lakhs
- d) Rs. 150 lakhs

12) What was the different between the total expenditure of company B in the year 2006 and 2008 together and the total expenditure of company C in the year 2007 and 2009 together ?

- a) Rs. 1000000
- b) Rs. 100000
- c) Rs. 10000000
- d) Rs. 100000000

13) What was the respective ratio between the expenditure of company A in the year 2009 and expenditure of company B in the year 2005 ?

- a) 5 : 3
- b) 3 : 4
- c) 3 : 5
- d) 3 : 2

14) In which year was the total expenditure by all three companies together second highest ?

- a) 2005
- b) 2006
- c) 2007
- d) 2008

15) Total expenditure of all three companies together in the year 2006 was what percentage of the total expenditure of company A overall the year together ?

- a) 75
- b) 72
- c) 65
- d) 60

Direction: 16- 20

Study the following table and answer the questions.

Classification of 100 Students Based on the Marks Obtained by them in Physics and Chemistry in an Examination.

Subject	Marks out of 50				
	40 & above	30 & above	20 & above	10 & above	0 & above
Physics	9	32	80	92	100
Chemistry	4	21	66	81	100
Average (Aggr)	7	27	73	87	100



egate
)

16) What is the different between the number of students passed with 30 as cut-off marks in Chemistry and those passed with 30 as cut-off marks in aggregate?

- a) 3 b) 4
c) 5 d) 6

17) If at least 60% marks in Physics are required for pursuing higher studies in Physics, how many students will be eligible to pursue higher studies in Physics?

- a) 27 b) 32
c) 34 d) 41

18) The percentage of number of students getting at least 60% marks in Chemistry over those getting at least 40% marks in aggregate, is approximately?

- a) 21% b) 27%
c) 29% d) 31%

19) The number of students scoring less than 40% marks in aggregate is?

- a) 13 b) 19
c) 20 d) 27

20) If it is known that at least 23 students were eligible for a Symposium on Chemistry, then the minimum qualifying

marks in Chemistry for eligibility to Symposium would lie in the range?

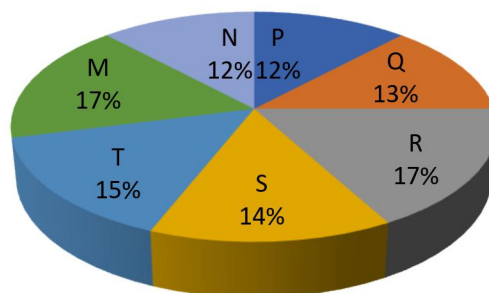
- a) 40-45 b) 30-40
c) 20-30 d) Below 20

Direction: 21 - 25

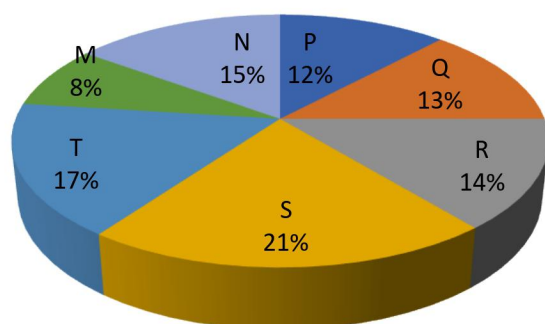
The following pie-charts show the distribution of students of graduate and post-graduate levels in seven different institutes in a town.

Distribution of students at graduate and post-graduate levels in seven institutes:

Total number of students of Graduate level = 27300



Total number of students of Post graduate Level = 24700



from institutes S and the number of students studying at graduate level from institute Q?

- a) 13 : 19 b) 21 : 13
c) 13 : 8 d) 19 : 13

25) Total number of students studying at post-graduate level from institutes N and P is

- a) 5601 b) 5944
c) 6669 d) 8372

21) What is the total number of graduate and post-graduate level students is institute R?

- a) 8320 b) 7916
c) 9116 d) 8099

22) What is the ratio between the number of students studying at post-graduate and graduate levels respectively from institute S?

- a) 14 : 19 b) 19 : 21
c) 17 : 21 d) 19 : 14

23) How many students of institutes of M and S are studying at graduate level?

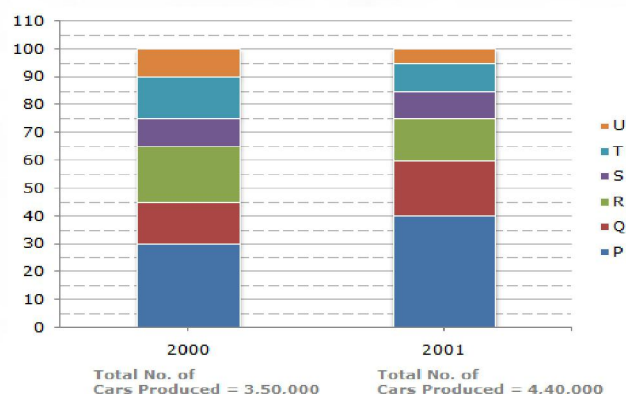
- a) 7516 b) 8463
c) 9127 d) 9404

24) What is the ratio between the number of students studying at post-graduate level

Directions 26 - 30

The bar graph given below shows the percentage distribution of the total production of a car manufacturing company into various models over two years.

Percentage of Six different types of Cars manufactured by a Company over Two Years



26) What was the difference in the number of Q type cars produced in 2000 and that produced in 2001?

- a) 35,500 b) 27,000
c) 22,500 d) 17,500

27) Total number of cars of models P, Q and T manufactured in 2000 is?

- a) 2,45,000 b) 2,27,500
c) 2,10,000 d) 1,92,500

28) If the percentage production of P type cars in 2001 was the same as that in 2000, then the number of P type cars produced in 2001 would have been?

- a) 1,40,000 b) 1,32,000
c) 1,17,000 d) 1,05,000

29) If 85% of the S type cars produced in each year were sold by the company, how many S type cars remain unsold?

- a) 7650 b) 9350
c) 11,850 d) 12,250

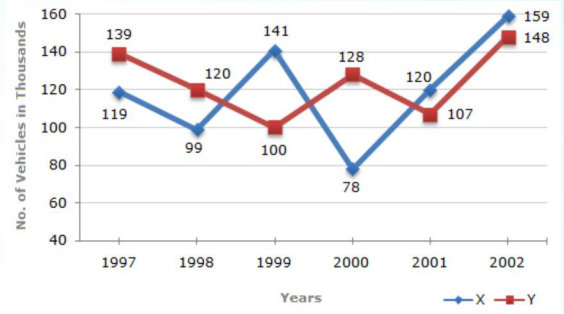
30) For which model the percentage rise/fall in production from 2000 to 2001 was minimum?

- a) Q b) R
c) S d) T

Direction: 31- 35

Study the following line graph and answer the questions based on it.

Number of Vehicles Manufactured by Two companies over the Years (Number in Thousands)



31) What is the difference between the number of vehicles manufactured by Company Y in 2000 and 2001 ?

- a) 50000 b) 42000
c) 33000 d) 21000

32) What is the difference between the total productions of the two Companies in the given years ?

- a) 19000 b) 22000
c) 26000 d) 28000

33) What is the average numbers of vehicles manufactured by Company X over the given period ? (rounded off to nearest integer)

- a) 119333 b) 113666
c) 112778 d) 111223

34) In which of the following years, the difference between the productions of

Companies X and Y was the maximum among the given years ?

- a) 1997 b) 1998
c) 1999 d) 2000

35) The production of Company Y in 2000 was approximately what percent of the production of Company X in the same year ?

- a) 173 b) 164
c) 132 d) 97

Direction: 36 – 40

Study the given table carefully and answer the questions that follow. Number of candidates appeared and qualified for a test (in hundreds) in 6 different years from 5 different zones.

Year	P		Q		R		S		T	
	App.	Qual.	App.	Qual.	App.	Qual.	App.	Qual.	App.	Qual.
2005	3.2	2.5	3.5	1.4	3.8	2.2	4.2	2.4	6.2	2.6
2006	4.6	3.4	6.9	4.2	6.9	4.4	7.4	3.3	6.2	4.8
2007	6.5	4.9	7.7	4.5	5.9	4.8	8.3	5.6	6.4	4.2
2008	7.4	5.7	5.4	3.4	7.2	3.2	9.3	6.4	7.8	6.2
2009	8.8	4.8	6.6	5.2	8.6	6.8	11.4	5.2	9.9	6.9
2010	9.2	5.6	10.6	6.4	10.3	7.4	14.2	11.4	11.8	9.4

Note: Here pp. means Appeared and Qual. means Qualified

36) Study the given table carefully and answer the questions that follow.

Number of candidates appeared and qualified for a test (in hundreds) in 6 different years from 5 different zones. In which years was in zones the difference

between the appeared candidates and qualified candidates the second lowest?

- a) 2005 b) 2006
c) 2007 d) 2008

37) The number of candidates who qualified the test from zone R in the year 2010 was approximately what percentage of the number of candidates who appeared from zone Q in the year 2008?

- a) 132 b) 137
c) 142 d) 152

38) What was the average number of candidates appeared from zone T over all the years together?

- a) 805 b) 810
c) 820 d) 830

39) What was the ratio of the number of candidates appeared from zone P in the year 2005 to the number of candidates qualified from zone S in the year 2007?

- a) 4 : 1 b) 4 : 3
c) 4 : 7 d) 9 : 4

40) From which zone was the total number of candidates who qualified the test, the second highest in the year?

- a) P b) Q
c) S d) T