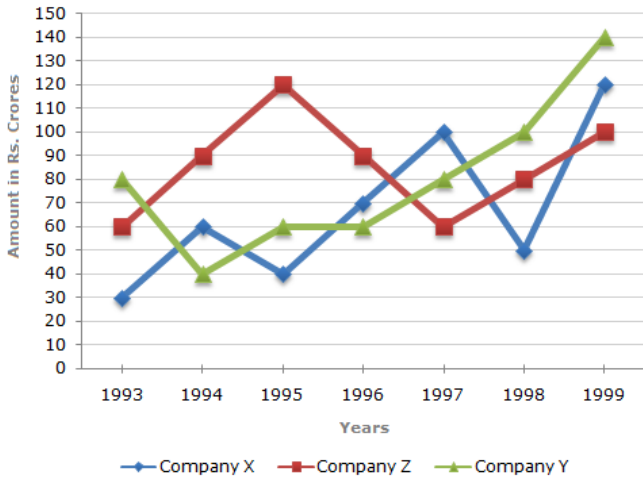


Most world record achievers in Mathematics



Total Marks: 54 No of Question: 54 Negative Marks: 0.25 Topic: DATA INTERPRETATION
Banking, SBI Clerk & PO, IBPS Clerk & PO, IBPS RRB, IPPB, SSC CGL, CHSL, MTS, GD, CPO, International Olympiad.

Three Companies Over the Years (in Rs. crore)



1. For which of the following pairs of years the total exports from the three Companies together are equal?

- A. 1995 and 1998
- B. 1996 and 1998
- C. 1997 and 1998
- D. 1995 and 1996

2. Average annual exports during the given period for Company Y is approximately what percent of the average annual exports for Company Z?

- A. 87.12%
- B. 89.64%
- C. 91.21%
- D. 93.33%

3. In which year was the difference between the exports from Companies X and Y the minimum?

- A. 1994
- B. 1995
- C. 1996
- D. 1997

4. What was the difference between the average exports of the three Companies in 1993 and the average exports in 1998?

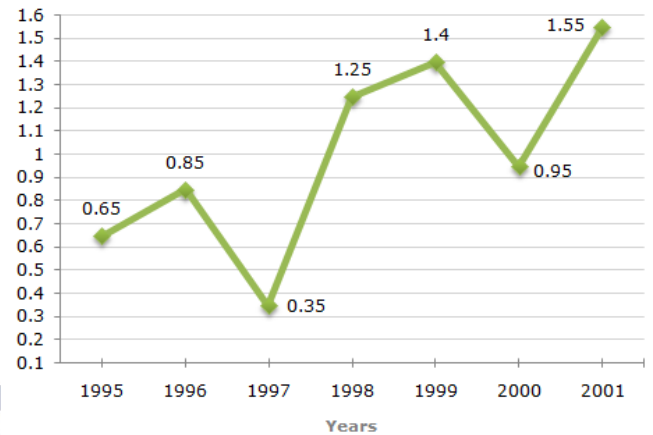
- A. Rs. 15.33 crores
- B. Rs. 18.67 crores
- C. Rs. 20 crores
- D. Rs. 22.17 crores

5. In how many of the given years, were the exports from Company Z more than the average annual exports over the given years?

- A. 2
- B. 3
- C. 4
- D. 5

2. The following line graph gives the ratio of the amounts of imports by a company to the number of exports from that company over the period from 1995 to 2001.

Imports to Exports by a Company Over the Years.



1. If the imports in 1998 was Rs. 250 crores and the total exports in the years 1998 and 1999 together was Rs. 500 crores, then the imports in 1999 was ?

- A. Rs. 250 crores
- B. Rs. 300 crores
- C. Rs. 357 crores
- D. Rs. 420 crores

2. The imports were minimum proportionate to the exports of the company in the year?

- A. 1995
- B. 1996
- C. 1997
- D. 2000

3. If the imports of the company in 1996 was Rs. 272 crores, the exports from the company in 1996 was?

- A. Rs. 370 crores
- B. Rs. 320 crores
- C. Rs. 280 crores
- D. Rs. 275 crores

4. In how many of the given years were the exports more than the imports?

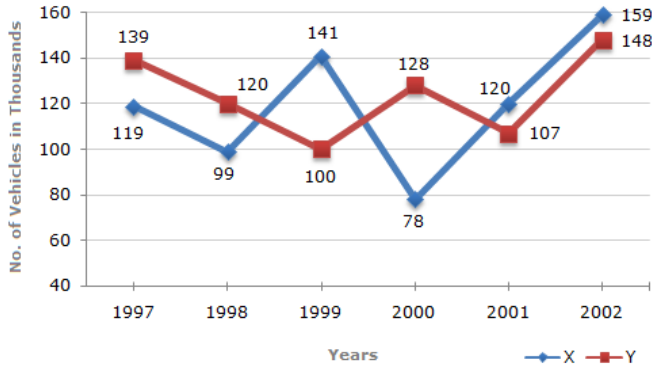
- A. 1
- B. 2
- C. 3
- D. 4

Most world record achievers in Mathematics



Total Marks: 54 No of Question: 54 Negative Marks: 0.25 Topic: DATA INTERPRETATION
Banking, SBI Clerk & PO, IBPS Clerk & PO, IBPS RRB, IPPB, SSC CGL, CHSL, MTS, GD, CPO, International Olympiad.

3. Number of Vehicles Manufactured by Two companies over the Years (Number in Thousands)



1. What is the difference between the number of vehicles manufactured by Company Y in 2000 and 2001?

- A. 50000 B. 42000 C. 33000 D. 21000

www.spardhaguru.in

2. What is the difference between the total productions of the two Companies in the given years

- A. 19000 B. 22000 C. 26000 D. 28000

3. What is the average numbers of vehicles manufactured by Company X over the given period? (Rounded off to nearest integer)

- A. 119333 B. 113666 C. 112778 D. 111223

4. In which of the following years, the difference between the productions of Companies X and Y was the maximum among the given years?

- A. 1997 B. 1998 C. 1999 D. 2000

5. The production of Company Y in 2000 was approximately what percent of the production of Company X in the same year?

- A. 173 B. 164 C. 132 D. 97