



spardhaguru2022



Spardhaguru Current affairs



Spardhaguru1



SpardhaGuru



Spardha.guru



www.spardha.guru



IBPS Office Assistant Pre Mock test

Total: 80 Que.

Time: 45 Min.

Quantitative Aptitude

Directions for Questions 1-10: What value should come in place of the question marks(?) in the following questions?

1). $1810 - 7176 \div 92 + 24\% \text{ of } 312.5 = ?^2 + 43$

- (a) 42
- (b) 45
- (c) 49
- (d) 35
- (e) 37

2). $\frac{\frac{11}{17} \text{ of } 1496 + 23 \times 42 + 6}{?} = 20$

- (a) 1950
- (b) 1940
- (c) 1948
- (d) 1935
- (e) 1956

3). $\sqrt{282.24} \div .8 + 65\% \text{ of } \frac{10}{13} \text{ of } 988 = ?$

- (a) 521
- (b) 515
- (c) 510
- (d) 513
- (e) 519

4). $\frac{1}{\sqrt{6400}} \text{ of } 16 + 15.8 = ?^3 - 28.8 \div .6$

- (a) 1
- (b) 3
- (c) 4
- (d) 9
- (e) 7

5). $23\frac{7}{15} + 18\frac{4}{45} - 24\frac{1}{18} = ?$

- (a) $15\frac{1}{2}$
- (b) $19\frac{1}{2}$
- (c) $18\frac{1}{2}$
- (d) $16\frac{1}{2}$
- (e) $17\frac{1}{2}$

6). $(\frac{13}{17} - \frac{19}{51}) \times ? = 201720 \div 82$

- (a) 6273
- (b) 6270
- (c) 6278
- (d) 6280
- (e) 6265

7). $13248 - 9258 - (4394 \div 26) = ? + 1840$

- (a) 1970
- (b) 1975
- (c) 1992
- (d) 1990
- (e) 1981

8). $88\% \text{ of } 1550 + \frac{1}{7} \text{ of } 49\% \text{ of } 1300 = ? \times 6$

- (a) 245.6
- (b) 238.4
- (c) 250.3
- (d) 248.6
- (e) 242.5





spardhaguru2022



Spardhaguru Current affairs



Spardhaguru1



SpardhaGuru



Spardha.guru



www.spardha.guru



9). 60% of 35% of 21000 + $\sqrt[3]{32^2} + 44 \times 16 = ?$

- (a) 4430
(b) 4429
(c) 4422
(d) 4426
(e) 4420

10). $(6696 \div 54) \times (1638 \div 63) = ?^2 - 28 \times 5$

- (a) 58
(b) 63 (c) 53
(d) 51 (e) 65

Directions for Questions 11-15: What approximate value should come in place of the question marks(?) in the following questions? (Note : you are not expected to calculate the exact value.)

11).

$\sqrt[3]{5103 \div 189} + (931 \div 19)^{\frac{1}{2}} = ?^2 - 91.89$

- (a) 20 (b) 23 (c) 18 (d) 10 (e) 15

12). $\frac{8}{19}$ of $\frac{5}{24}$ of 1595.91 + $\sqrt{2210} = ?$

- (a) 225
(b) 212
(c) 126
(d) 151
(e) 187

13). $(0.0729 \div .0081)^3 \div (0.081 \div 0.027)^3 \times 2.89 = ?^4$

- (a) 11
(b) 15
(c) 12
(d) 8
(e) 3

14). 39% of 1890 + 17% of 2410 + 57% of 3295 = ?

- (a) 3115
(b) 2910
(c) 3103
(d) 2950
(e) 3030

15). $\frac{1}{37}$ of 3108 + $(27.04 \times 43) + \sqrt{40400} = ?$

- (a) 1419
(b) 1498
(c) 1446
(d) 1356
(e) 1485

Directions for Questions 16-20: What will come at the place of question mark (?) in the following number series?

16). 15, 67, 274, ?, 4408, 17635

- (a) 1101
(b) 1100
(c) 1103





spardhaguru2022



Spardhaguru Current affairs



Spardhaguru1



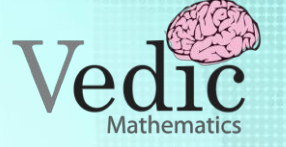
SpardhaGuru



Spardha.guru



www.spardha.guru



(d) 1102

(e) 1105

17). 8,50,90,126, ?, 178

(a) 153

(b) 156

(c) 154

(d) 158

(e) 159

18). 4,3, ?, 143,335,1566.5

(a) 10

(b) 14

(c) 12

(d) 13

(e) 15

19). 18,40,129, ?, 2685,16146

(a) 532

(b) 535

(c) 533

(d) 536

(e) 530

20). 34,41,62,97,146, ?

(a) 209

(b) 210

(c) 205

(d) 208

(e) 212

21). If the circumference of a circle is 220 m then what will be the area of a circle?

(a) 3845 m^2

(b) 3853 m^2

(c) 3855 m^2

(d) 3848 m^2

(e) 3850 m^2

22). The difference between C.I and S.I. on a certain sum at 19% p.a. for 2 years is Rs. 1559.52 . Find the sum?

(a) Rs. 43,180

(b) Rs. 43,100

(c) Rs. 43,250

(d) Rs. 43,200

(e) Rs. 43,300

23). A car travelling at a speed of 126 kmph catches another car travelling in the same direction and then leaves it 300 m behind in 30 seconds. What is the speed of the second car in km/h ?

(a) 85 kmph

(b) 90 kmph

(c) 88 kmph

(d) 93 kmph

(e) 94 kmph

24). Two pipes can fill an empty tank separately in 9 minutes and 15 minutes respectively and a third pipe can empty 35 litres water per minute. If all three pipes are opened together then the tank





spardhaguru2022



Spardhaguru Current affairs



Spardhaguru1



SpardhaGuru



Spardha.guru



www.spardha.guru



becomes full in 45 minutes. What is the capacity of the tank?

- (a) 235litres
- (b) 240litres
- (c) 250litres
- (d) 225litres
- (e) 220litres

25). The average of four consecutive odd numbers W, X, Y, Z is 54. What is the sum of X, Y and Z ?

- (a) 168
- (b) 172
- (c) 170
- (d) 165
- (e) 160

26). The marked price of an article is Rs. 6,000. It is to be sold at Rs. 4428 at two successive discounts. If the first discount is 18%, then the second discount is:

- (a) 7%
- (b) 15%
- (c) 9%
- (d) 12%
- (e) 10%

27). What is the least number to be subtracted to 2306 to make it a perfect square?

- (a) 4
- (b) 5
- (c) 2

- (d) 3
- (e) 6

28). Gaurav and Tannu together can complete a work in 18 days. Tannu can complete the same work in 54 days. How many days will Gaurav take to complete the same work?

- (a) 25 days
- (b) 27 days
- (c) 32 days
- (d) 30 days
- (e) 35 days

29). In how many different ways can the letter of word "ARTICHOKE" be arranged.

- (a) 3628800
- (b) 5040
- (c) 720
- (d) 362880
- (e) 2520

30). A bag contains 9 yellow, 7 red and 6 black balls. If 5 balls are drawn at random. What is the probability that none is black?

- (a) $\frac{628}{4389}$
- (b) $\frac{722}{4389}$
- (c) $\frac{728}{4389}$
- (d) $\frac{731}{4389}$
- (e) $\frac{728}{4387}$





spardhaguru2022



Spardhaguru Current affairs



Spardhaguru1



SpardhaGuru



Spardha.guru

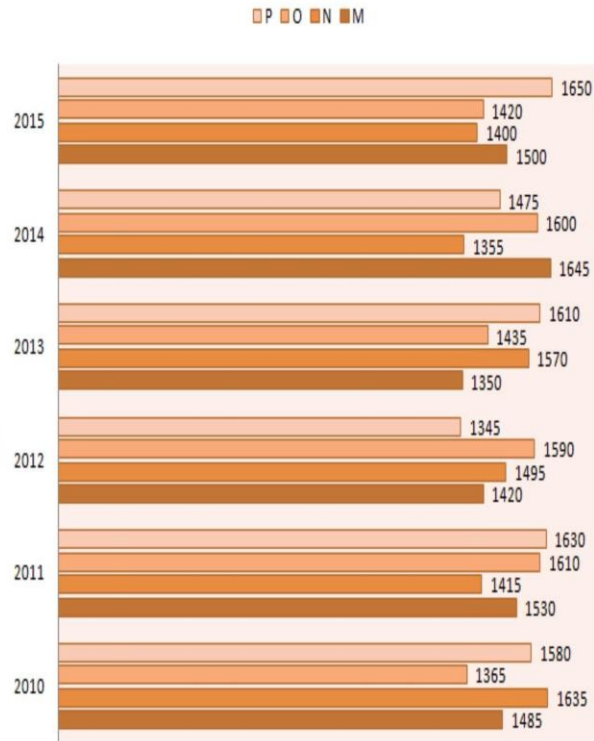


www.spardha.guru



Directions for Questions 31-35: Study the following Bar Chart carefully to answer the given questions.

Data related number of male employees working in four different companies over the year



31). What is the percentage increase in number of male employees working in company P in 2011 as compared to the previous year?

- (a) 7.25%
- (b) 4.35%
- (c) 6.14%
- (d) 3.16%
- (e) 5.21%

32). Number of male employees working in company N and O together in 2013 is what percent of number of male employees working in company M in 2010, 2011 and 2012 together?

- (a) 70.89%
- (b) 67.76%
- (c) 60.12%
- (d) 65.36%
- (e) 59.75%

33). What is the difference between number of male employees working in company P in 2010, 2011 and 2015 together and number of male employees working in company M, N and O together in 2013?

- (a) 510
- (b) 507
- (c) 509
- (d) 505
- (e) 500

34). Number of male employees working in company M and P together in 2014 is what percent of number of employees working in company O in 2011, 2012 and 2014 together?

- (a) 62%
- (b) 61%
- (c) 69%
- (d) 65%
- (e) 60%





spardhaguru2022



Spardhaguru Current affairs



Spardhaguru1



SpardhaGuru



Spardha.guru



www.spardha.guru



35). What is the approximately percentage decrease in number of employees working in company M in 2015 as compared to the previous year?

- (a) 14%
- (b) 15%
- (c) 8%
- (d) 13%
- (e) 10%

36). A 480 m long train running at the speed of 87 kmph will take how much time to cross another 375 m long train running in opposite direction at the speed of 75 kmph ?

- (a) 16 s
- (b) 15 s
- (c) 19 s
- (d) 20 s
- (e) 18 s

37). When 171 is added to 56% of a number the result thus obtained is obtained 68% of 1075 . What is the number?

- (a) 1,000
- (b) 1,020
- (c) 1,015
- (d) 985
- (e) 990

38). A sum of money invested at S.I. to accrued Rs 2100 in 5 years and to Rs 2520 in 8 years the rate of interest per annum?

- (a) 13%
- (b) 10%
- (c) 15%
- (d) 9%
- (e) 12%

39). 15 boys or 21 girls can complete a work in 12 days. How many days 4 boys and 7 girls will take to complete this work?

- (a) 23 days
- (b) 22 days
- (c) 17 days
- (d) 19 days
- (e) 20 days

40). A bag contains 9 yellow, 7 red and 6 black balls. If 4 balls are drawn at random. What is the probability that at least one is yellow?

- (a) $\frac{1320}{1463}$
- (b) $\frac{1321}{1463}$
- (c) $\frac{1329}{1463}$
- (d) $\frac{1329}{1462}$
- (e) $\frac{1323}{1463}$

Reasoning Ability





spardhaguru2022



Spardhaguru Current affairs



Spardhaguru1



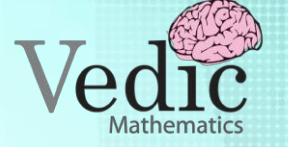
SpardhaGuru



Spardha.guru



www.spardha.guru



Directions for Questions 1-4: Study the given information carefully and answer the given questions.

Y is sister of X. X is son of R. R is sister of Q. Q is brother of S. P is mother of Q. T is wife of S. W is son of V. U is daughter of T. U is married to V.

1). Who is the mother in law of T ?

(a) P (b) R (c) Y (d) P or R (e) None of these

2). How is T related of W ?

(a) Maternal grandmother
(b) Mother
(c) Great grandmother
(d) Aunt
(e) CND

3). How is S related to Y ?

(a) Father
(b) Brother
(c) Son
(d) Maternal uncle
(e) None of these

4). How is X related to U ?

(a) Brother
(b) Sister
(c) Cousin
(d) Uncle
(e) None of these

5). In a school of 120 students, seema rank from the top is sixty. Rashmi is twenty-fifth rank below of seema. What is Rashmi rank from the bottom?

(a) 34
(b) 38
(c) 37
(d) 35
(e) 36

Directions for Questions 6-10: In each of the following questions, assuming the given statement to be true, Find which of the following two conclusion I and II is/ are definitely true. Give answer:

6). Statements - Mohan < Sohan < Rohan, Rohan = Pintu > Rinku < Monu

Conclusion I - Mohan < Rinku

Conclusion II - Rohan > Monu

(a) If only conclusion I is true.
(b) If only conclusion II is true.
(c) If either I or II is true.
(d) If neither I nor II is true.
(e) If both I and II are true

7). Statements - $Z \leq B = A, A > F < G, G \leq H$

Conclusions I - $Z \leq F$

Conclusion II - $A > H$

(a) If only conclusion I is true.
(b) If only conclusion II is true.
(c) If either I or II is true.
(d) If neither I nor II is true.





spardhaguru2022



Spardhaguru Current affairs



Spardhaguru1



SpardhaGuru



Spardha.guru



www.spardha.guru



(e) If both I and II are true

8). Statements - $G = H < L \geq Q > S \leq T = U$

Conclusions I - $G < S$

Conclusion II - $L > S$

- (a) If only conclusion I is true.
- (b) If only conclusion II is true.
- (c) If either I or II is true.
- (d) If neither I nor II is true.
- (e) If both I and II are true

9). Statements - $Ajay > Gagan = Sonu, Sonu \geq$

$Randhir \geq Shashank > Sanjay$

Conclusion I - $Gagan \geq Shashank$

Conclusion II - $Sanjay < Ajay$

- (a) If only conclusion I is true.
- (b) If only conclusion II is true.
- (c) If either I or II is true.
- (d) If neither I nor II is true.
- (e) If both I and II are true

10). Statements - $T \leq R > S = G \geq F = A < H$

Conclusion I - $A < R$

Conclusion II - $T \leq H$

- (a) If only conclusion I is true.
- (b) If only conclusion II is true.
- (c) If either I or II is true.
- (d) If neither I nor II is true.
- (e) If both I and II are true

Directions for Questions 11-15: Study the following information carefully and answer the question given below:

Mohan, Sohan, Rohan, Monu, Sonu, Tarun, Gagan, Rinku and Pintu are sitting around a circle facing outside. Only two persons sit between Gagan and Rinku. Sonu is second to the left of Mohan. Tarun is an immediate right of Rohan. Monu is third to the right of Sohan who is second to the right of Gagan. Sonu is an immediate right of Rinku.

11). Who is fifth to the left of Pintu?

- (a) Rohan
- (b) Mohan
- (c) Monu
- (d) Tarun
- (e) None of these

12). Who is second to the right of Tarun?

- (a) Sohan
- (b) Pintu
- (c) Gagan
- (d) Monu
- (e) Sonu

13). Who among the following is an immediate neighbor of Sohan?

- (a) Rinku, Pintu
- (b) Pintu, Tarun
- (c) Rinku, Sonu
- (d) Sonu, Tarun





spardhaguru2022



Spardhaguru Current affairs



Spardhaguru1



SpardhaGuru



Spardha.guru



www.spardha.guru



(e) None of these

14). Who is fourth to the left of Rohan?

(a) Sohan

(b) Rinku

(c) Pintu

(d) Gagan

(e) None of these

15). What is Gagan's position with respect to Sohan?

(a) Seventh to the right

(b) Seventh to the left

(c) Third to the left

(d) Immediate left

(e) Immediate right

Directions for Questions 16-20: Read the following information carefully and answer the question given below:

Mohan, Sohan, Rohan, Monu, Sonu, Tarun, Gagan and Rinku are seated in a straight line facing east. Sonu is third to the right of Tarun and is second to the left of Mohan. Sohan is second to the left of Rohan. Monu is an immediate right of Tarun who is second to the right of Rinku. Rinku sits at one of the extreme ends of line.

16). What is the position of Sohan with respect to Gagan?

(a) Second to the left

(b) Third to the right

(c) Second to the right

(d) Fourth to the left

(e) None of these

17). How many person are seated between Mohan and Monu?

(a) One

(b) Two

(c) Three

(d) Four

(e) Five

18). Who is fifth to the left of Rohan?

(a) Monu

(b) Tarun

(c) Gagan

(d) Rinku

(e) None of these

19). Who is fourth to the right of Rinku?

(a) Sohan

(b) Monu

(c) Tarun

(d) Rohan

(e) None of these

20). Which of the following represents the person seated at the extreme right end of line?

(a) Mohan

(b) Rohan





spardhaguru2022



Spardhaguru Current affairs



Spardhaguru1



SpardhaGuru



Spardha.guru



www.spardha.guru



- (c) Sonu
(d) Gagan
(e) None of these

Directions for Questions 21-25: In each question below are three statements followed by two conclusions numbered I and II. You have to take the given statements to be true even if they seem to be at variance from commonly facts and then decide which of the given conclusions logically follows from the given statements.

21). Statements -

I- Some cows are goats.

II- Some goats are deer.

III- All deer are lions.

Conclusions -

1 - Some cows are lions.

II - All goat being lions is a possibility.

(a) If only conclusion I follows.

(b) If only conclusion II follows.

(c) If either conclusion I or II follows.

(d) If neither conclusion I nor II follows.

(e) If both conclusions I and II follows.

22). Statements -

I- Some roads are towns.

II- Some towns are states.

III- Some states are worlds.

Conclusions -

I - Some roads are worlds.

II - No road is world.

(a) If only conclusion I follows.

(b) If only conclusion II follows.

(c) If either conclusion I or II follows.

(d) If neither conclusion I nor II follows.

(e) If both conclusions I and II follows.

23). Statements -

I- All sparrow are duck.

II- All myna are duck.

III- Some duck are cock.

Conclusions -

I - All myna being sparrow is a possibility.

II - All duck being cock is a possibility.

(a) If only conclusion I follows.

(b) If only conclusion II follows.

(c) If either conclusion I or II follows.

(d) If neither conclusion I nor II follows.

(e) If both conclusions I and II follows.

24). Statements -

I- All apple are plum.

II- All plum are date.

III- Some date are guava.

Conclusions -

I - Some apple are guava.

II - All date are apple.

(a) If only conclusion I follows.

(b) If only conclusion II follows.

(c) If either conclusion I or II follows.

(d) If neither conclusion I nor II follows.





spardhaguru2022



Spardhaguru Current affairs



Spardhaguru1



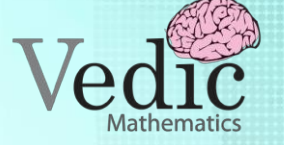
SpardhaGuru



Spardha.guru



www.spardha.guru



(e) If both conclusions I and II follows.

25). Statements -

I- All cows are goats.

II- All goats are deer.

III- All deer are lions.

Conclusions -

1 - Some cows are lions.

II - Some lions are goats.

(a) If only conclusion I follows.

(b) If only conclusion II follows.

(c) If either conclusion I or II follows.

(d) If neither conclusion I nor II follows.

(e) If both conclusions I and II follows.

26). Who lives on the floor immediately above T ?

(a) Q

(b) P

(c) S

(d) R

(e) None of these

27). How many person lives between the floor on which V and X live?

(a) One

(b) Two

(c) Four

(d) Three

(e) None of these

28). Who among the following lives on the floor number 9 ?

(a) Q

(b) T

(c) X

(d) W

(e) None of these

29). Who lives on the floor immediately below P ?

(a) W (b) X (c) U (d) S (e) None of these

30). Who among the following lives on the floor number 3 ?

(a) S

(b) W

(c) X (d)

Directions for Questions 26-30: Read the following passage carefully and answer the question given below it -

Ten persons P, Q, R, S, T, U, V, W, X and Y lives on separate floor of an 10 floor building, But not necessarily in the same order. Ground floor is numbered 1, first floor is numbered 2 and so on until the topmost floor is numbered 10 . W lives on an immediately above X and immediately below S . Only two persons live between Y and Q. P lives on sixth floor. U lives on an immediately above R . X does not live on an even numbered floor. V lives on an immediately below T. X lives on an immediately above U. Y does not live on an even numbered floor.





spardhaguru2022



Spardhaguru Current affairs



Spardhaguru1



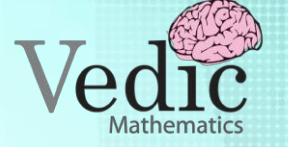
SpardhaGuru



Spardha.guru



www.spardha.guru



(d) R (e) Q

Directions for Questions 31-35: Study the following arrangement carefully and answer the question given below:

B, F, \$, 1, A, 8, C, D, G, #, 7, &, 5, E, 6, %, H, J, L, @, I, 3, U, 4, M, N, X, +, Y, Z, 9, O, 2, T, V, *, Q, R, !, 0

31). Four of the following five are alike in a certain way based on their positions in the given arrangement and so form a group.

Which is the one that does not belong to that group?

- (a) BFA
- (b) CD7
- (c) 5EH
- (d) L@3
- (e) U4X

32). Which of the following is twenty-fifth to the right of forty from the right end?

- (a) M
- (b) N
- (c) X
- (d) 4

33). What will come in place of question mark (?) in the following series based on the above arrangement?

F 1 A, D #7, E % H, ?

- (a) @ 34
- (b) @ I U
- (c) I U 4
- (d) @ 3 U
- (e) None of these

34). Which of the following is thirteenth to the left of thirty-fifth from the left end?

- (a) I
- (b) U
- (c) 3
- (d) 4
- (e) M

35). If all consonants are dropped from the above arrangement, which of the following will be fifteenth from the left end of the above arrangement?

- (a) @
- (b) 4
- (c) 3
- (d) I
- (e) U

Directions for Questions 36-38: In a certain code 'All mobile has camera' is written as 'pa, ta, mi, li', 'Camera clicks the photos' is written as 'fe, mi, ai, na', 'All photos are not selfy' is written as 'ai, ta, ge, ci, ha', 'Selfy clicks are easy' is written as 'fe, ha, ze, ci'.





spardhaguru2022



Spardhaguru Current affairs



Spardhaguru1



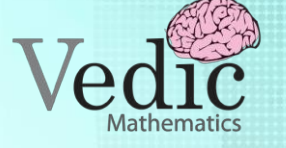
SpardhaGuru



Spardha.guru



www.spardha.guru



36). What is the code for 'all'?

- (a) Ta
- (b) Ai
- (c) Li
- (d) Ge (e) Ci

37). What is the code for 'camera'?

- (a) Fe
- (b) Na
- (c) Mi
- (d) Ai (e)

Q.Type:- MCQ

Single,

38). What is the code for 'selfy'?

- (a) Ha or ai
- (b) Ci or ai
- (c) Ha or ci
- (d) Ci or ze
- (e) Ze or ha

39). Tarun go to north, turn left, then turn right again and then go to the left. In which direction is tarun moving now?

- (a) South
- (b) West
- (c) East
- (d) North
- (e) None of these

40). How many such pairs of letters are there in the word 'EVENING' each of which has as many letters between them in the word (in both forward and backward direction) as they have between them in English alphabetical series:

- (a) One
- (b) Two
- (c) Three
- (d) Four
- (e) Five

