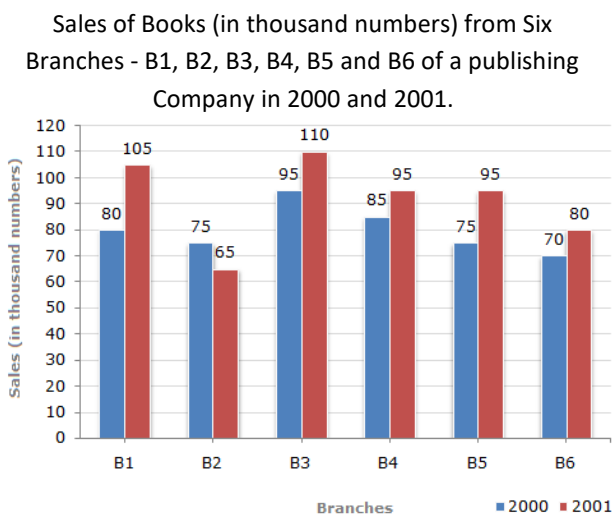


Most world record achievers in Mathematics



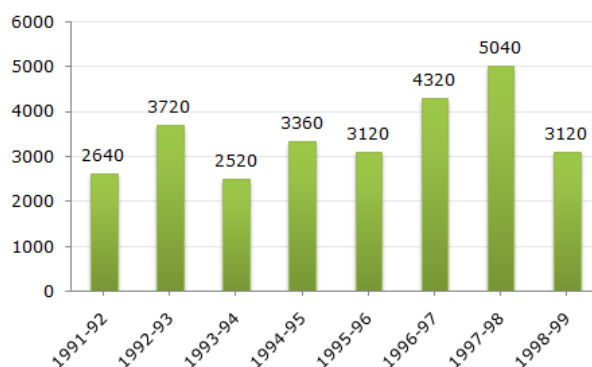
Total Marks: 54 No of Question: 54 Negative Marks: 0.25 Topic: DATA INTERPRETATION
Banking, SBI Clerk & PO, IBPS Clerk & PO, IBPS RRB, IPPB, SSC CGL, CHSL, MTS, GD, CPO, International Olympiad.

1. The bar graph given below shows the sales of books (in thousand number) from six branches of a publishing company during two consecutive years 2000 and 2001.



- What is the ratio of the total sales of branch B2 for both years to the total sales of branch B4 for both years?
A. 2:3 B. 3:5 C. 4:5 D. 7:9
- Total sales of branch B6 for both the years is what percent of the total sales of branches B3 for both the years?
A. 68.54% B. 71.11%
C. 73.17% D. 75.55%
- What percent of the average sales of branches B1, B2 and B3 in 2001 is the average sales of branches B1, B3 and B6 in 2000?
A. 75% B. 77.5% C. 82.5% D. 87.5%
- What is the average sales of all the branches (in thousand numbers) for the year 2000?
A. 73 B. 80 C. 83 D. 88

2. The bar graph given below shows the foreign exchange reserves of a country (in million US \$) from 1991 - 1992 to 1998 - 1999.



- The ratio of the number of years, in which the foreign exchange reserves are above the average reserves, to those in which the reserves are below the average reserves is?
A. 2:6 B. 3:4 C. 3:5 D. 4:4
- The foreign exchange reserves in 1997-98 was how many times that in 1994-95?
A. 0.7 B. 1.2 C. 1.4 D. 1.5
- For which year, the percent increase of foreign exchange reserves over the previous year, is the highest?
A. 1992-93 B. 1993-94 C. 1994-95 D. 1996-97
- The foreign exchange reserves in 1996-97 were approximately what percent of the average foreign exchange reserves over the period under review?
A. 95% B. 110% C. 115% D. 125%

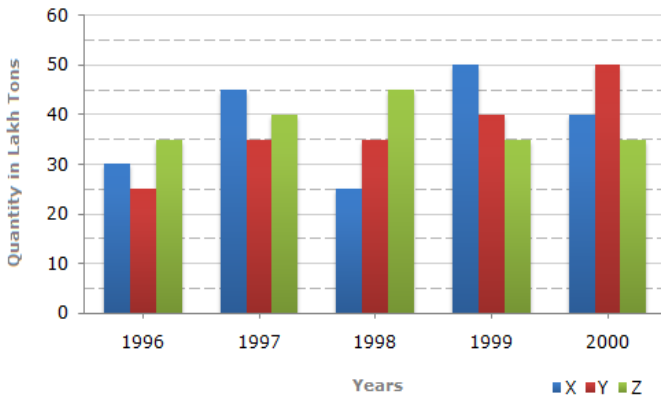
Most world record achievers in Mathematics



Total Marks: 54 No of Question: 54 Negative Marks: 0.25 Topic: DATA INTERPRETATION
Banking, SBI Clerk & PO, IBPS Clerk & PO, IBPS RRB, IPPB, SSC CGL, CHSL, MTS, GD, CPO, International Olympiad.

3. The bar graph given below shows the data of the production of paper (in lakh tonnes) by three different companies X, Y and Z over the years.

Production of Paper (in lakh tonnes) by Three Companies X, Y and Z over the Years.



www.spardhaguru.in

1. For which of the following years, the percentage rise/fall in production from the previous year is the maximum for Company Y?

- A. 1997 B. 1998 C. 1999 D. 2000

2. What is the ratio of the average production of Company X in the period 1998-2000 to the average production of Company Y in the same period?

- A. 1:1 B. 15:17 C. 23:25 D. 27:29

3. The average production for five years was maximum for which company?

- A. X B. Y C. Z D. X and Z both